



THE ULTIMATE WORKSITE SOLAR CCTV SOLUTION

Protect your site & assets with a 4G Solar
Surveillance System from VIP Vision™

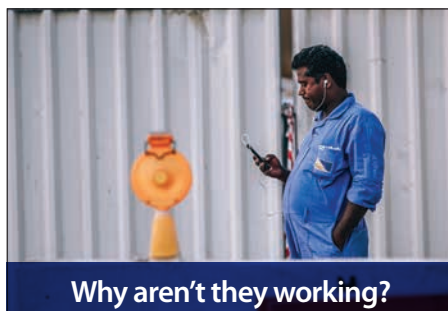
VIEW PROGRESS, IMPROVE OH&S AND DETER CRIME

ACHIEVE MORE THAN SECURITY WITH CCTV



Covering every building site security risk.

Adopt surveillance technologies used by leading businesses to cut inefficiency, protect your interests and re-energise your projects. With so much going on at a construction site, it's hard to keep a watchful eye on every aspect of the project at all times.



The challenges of construction management:

No on-site power

Often times, construction sites lack a reliable mains power supply. This makes it challenging to set up electrical systems, such as surveillance and lighting.



Direct management

Depending on location, or from having multiple projects on at once, it can be difficult for a site manager to be at a site in-person every day to oversee projects.



Theft & vandalism

Repairing site damage and replacing stolen equipment can be costly. It's important to protect the site from theft and vandalism - from both employees and outsiders.



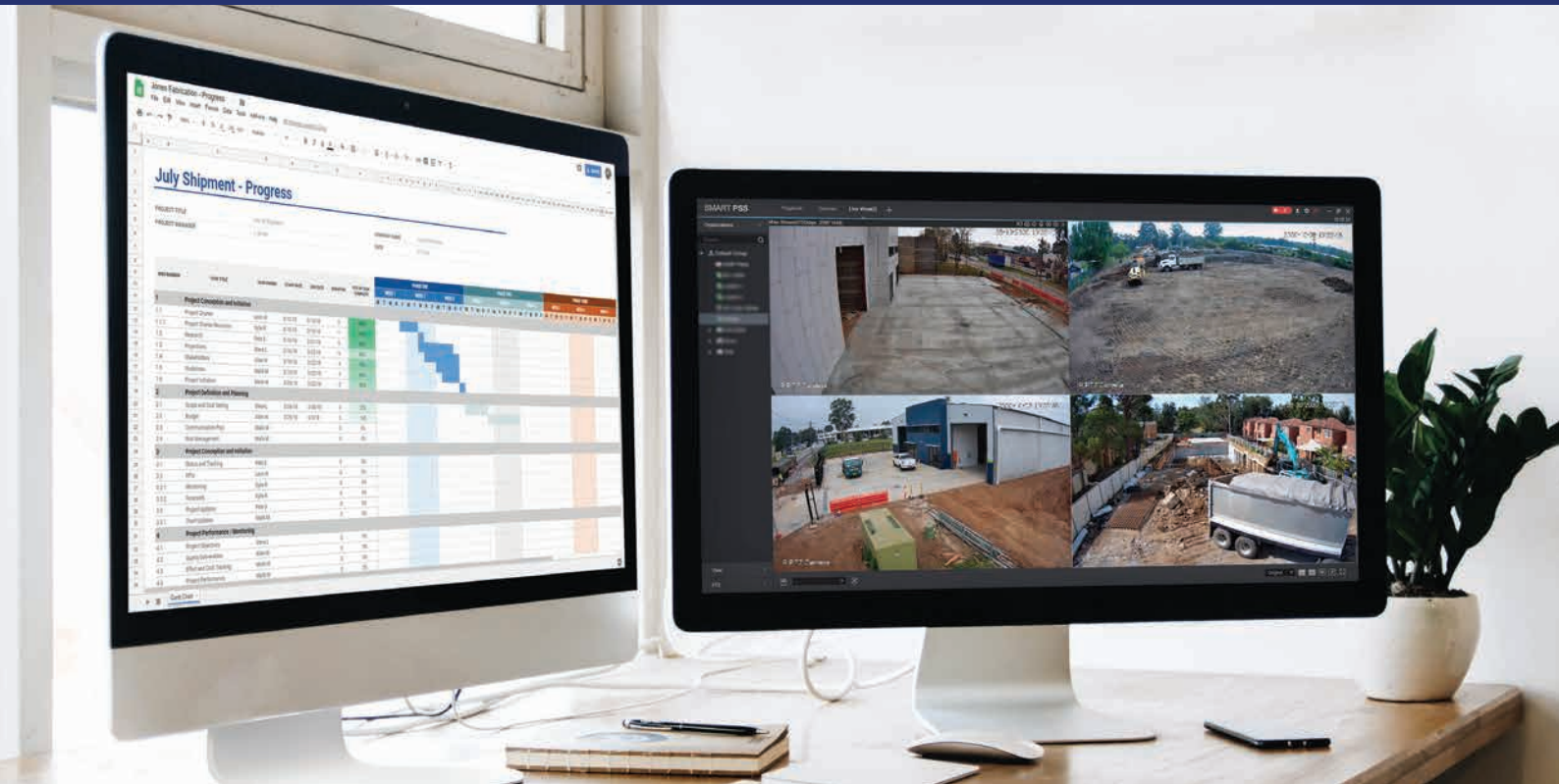
Safety & liability

Site managers bear responsibility in the safety of construction workers. It can be difficult to ensure OHS protocols are being followed at all times.



VIEW MULTIPLE SITES AT ONCE

GET THE FULL PICTURE WHEREVER YOU GO



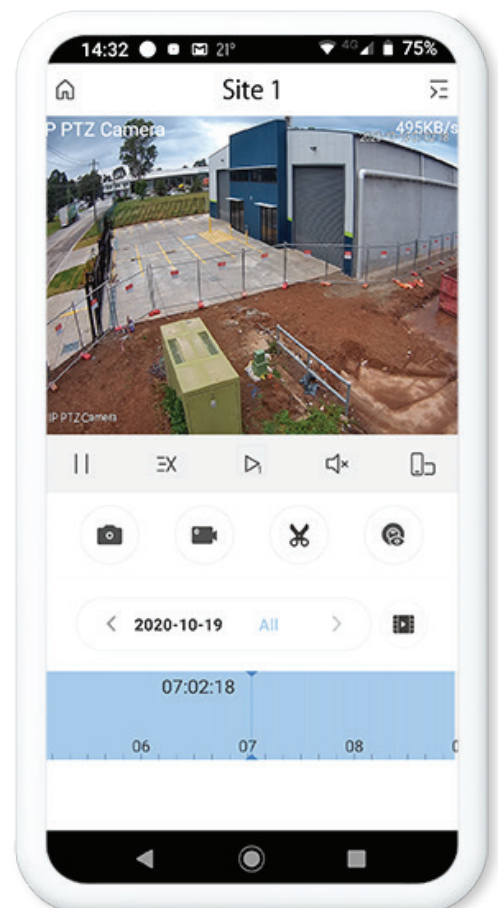
The latest generation of Solar CCTV Systems from VIP Vision™ can deliver professional video surveillance to the most challenging of installation sites.

The system features the latest in 4G-enabled remote site surveillance, with advanced camera artificial intelligence and simplicity of installation & operation.

The system offers comprehensive remote viewing options. View your site from almost any device, including iOS (iPhone & iPad), Android, PC & Mac software or web browser.

Receive instant mobile alerts via push notification or email address

With the free app, you can live view and play back at any time. If an alarm event is triggered, push notifications or emails with snapshots can be automatically sent to multiple recipients.



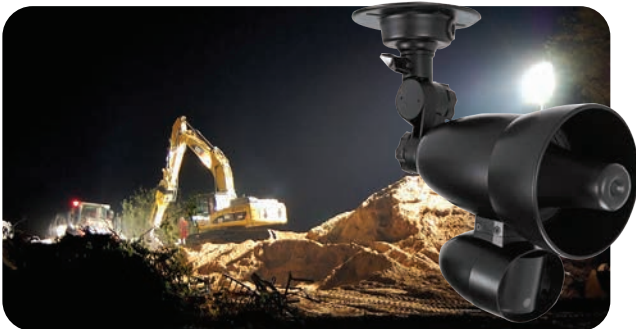
Our standard solar surveillance model includes:



Optional Accessories:

(At additional cost)

Active Voice Deterrence Alarm



Deter unwanted intruders. The Voice Recording Loudspeaker outputs pre-recorded audio messages when triggered.

Professional Back-to-Base Monitoring



Add B2B alarm monitoring. If a human or vehicle is detected out of hours, the footage can be reviewed by a monitoring centre and action taken.



ACHIEVE SITE-WIDE CCTV COVERAGE WITH FULL MOTORISED 355° PAN-TILT-ZOOM CONTROL

IP PTZ Camera

Cover the whole scene with pan-tilt-zoom.

Capture incredible images with the PTZ camera. This camera can easily cover entire sites and makes setting up a breeze. The 4 x lossless optical zoom lens allows you to capture finer details when required.

The camera can be controlled remotely, allowing for easy image adjustment via smartphone or desktop application.



Using customised presets, the camera view can be quickly moved from location to location, making the review process fast and efficient.

See more detail with 4x lossless optical zoom.

Remotely adjust the camera from wide angle view to a narrower view, to see enhanced image detail when required.



Unzoomed, the camera has a wide 97° field of view.



At 4x lossless optical zoom, the camera has a narrow 32° field of view, but greater image detail.

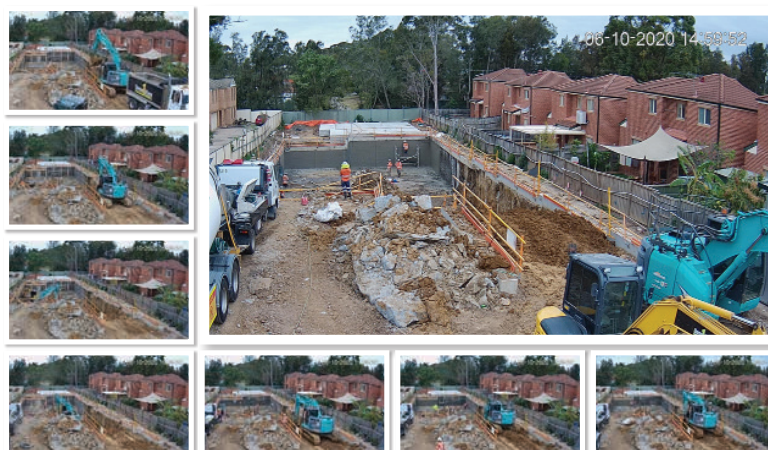
24/7 Recording

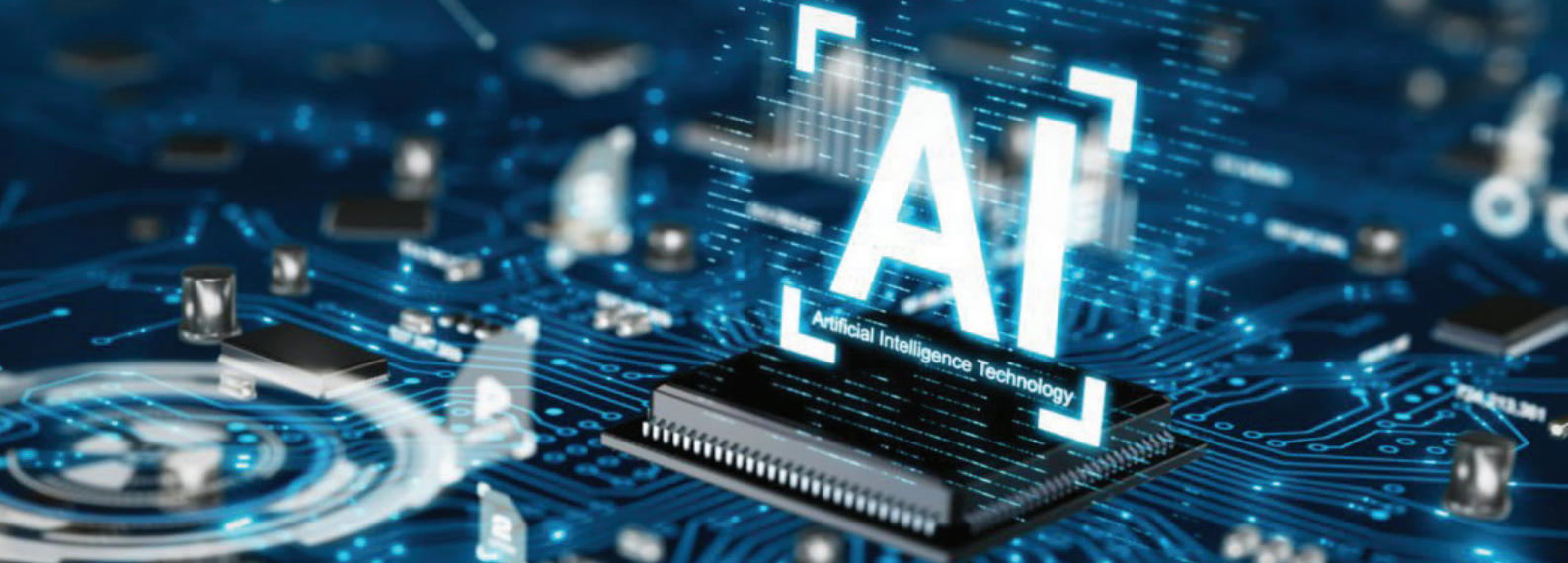
The camera features 24/7 continuous edge recording & uses a surveillance-grade micro SD card, automatically overwriting the oldest footage. A 256GB card can record over 7 days of footage at full resolution (the use of motion activation only can far extend this period.)



Generate Timelapse Videos

Set up the camera to automatically take intermittent snapshots over a preset period, which uploads them to your nominated cloud storage provider. You can then generate a video from them, using standard Windows 10 tools.



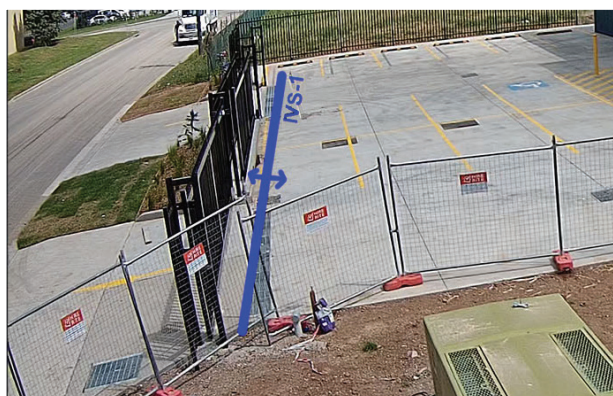


Receive accurate alerts with Artificial Intelligence.

Our systems are capable of advanced intelligent features, including tripwire & intrusion detection with the ability to identify people & vehicles from other moving objects.

Tripwire

Sends alerts when a person and/or vehicle crosses a virtual tripwire.



"I want to be alerted whenever a vehicle comes through the gate at the jobsite."

Intrusion

Sends alerts when a person and/or vehicle enters a virtual fenced area.



"I want to know when a person or vehicle enters my jobsite out of hours."

No More False Alarms

Recognise people & vehicles. The cutting-edge AI camera can tell people and vehicles apart from other moving elements (such as trees, birds, etc), ensuring alarms aren't triggered needlessly during motion detection, tripwire or intrusion.



Easy installation with hinged pole.

1. Simply install the base on a hard flat surface.
2. Bolt the pole to the base.
3. Lower the hinged pole and connect the solar module & camera.
4. Raise the hinged pole and lock it in place.

Solar Mount Pole


- 4.5m tall hinged galvanized pole
- No need for a ladder or working at heights

Solar Mount Base






- Large heavy duty base ~500kg
- Reinforcement for extra strength
- Available assembled or unassembled



Order options:

SLR Solar Mounting Solutions				
Image				
Product Code	SLR-POL4.5H	SLR-POLBASE	SLR-POLCONC	SLR-POLDELSYD
Description	4.5m Hinged Galvanised Pole	Unassembled Solar Base	Assembled Solar Base	Solar System Delivery & Installation
Components	Includes 1 x Pole	Includes 1 x Base, 4 x Mounting J-Bolts, Nuts & Washers <i>On-site assembly required, 0.2m3 concrete not included. Finished item shown.</i>	Solar pole base pre-assembled and filled with concrete <i>Approx. 500kg</i>	Delivery & installation of a single solar pole & base in the Sydney Metro Area. <i>Delivery & labour cost ONLY - parts not included</i>

Standard kit specifications:

SLR-B120-4G Solar Surveillance System		
Solar Panel		
Image		
Panel Type	120W monocrystalline silicon panel	
Conversion Rate	Up to 21% efficiency	
Battery	500Wh Lithium Iron Phosphate (LiFePO4)	
Panel Adjustment	-60° ~ 60° tilt adjustable with angle compass	
Ingress Protection	IP65	
Wind Resistance	Up to 65m/s	
Dimensions	1321 x 525 x 161mm	
Pole Diameter	Ø50 ~ 60mm	
Area Light		
Light Module	50W LED (3030 Philips), 9400lm (180lm/W)	
Light Characteristics	145° x 100° (batwing) beam angle / 5700K cool white / 50,000hrs rated lifespan	
Motion Detection	Microwave motion sensor, Ø8 ~ 15m range (at 10m height)	
Adjustable Settings	Normal & Morning time periods / Brightness on motion / On-time delay / Brightness after delay	
Light Adjustment	-30° ~ +30° tilt adjustable twin LED module	
Camera		
Camera Options		4.0MP Mini AI PTZ Dome 2.8 ~ 12mm Motorised lens 31.6° ~ 96.9° (4x optical zoom) Pan: 0° ~ 355° / Tilt: 5° ~ 90° IP66 weather resistant IK08 vandal resistant Video analytics (tripwire etc.) Perimeter protection to identify people & vehicles
Connectivity		
Inclusions and Optional Accessories		
	Solar CCTV Assembly (included) Mounting kit with backing box and triple-clamp pole mount (pole not incl.)	256GB MicroSD (included) 256GB surveillance grade microSD card for footage recording
		 4G LTE Wireless Access Point LTE connectivity up to 150Mbps speeds 4G: FDD-B1/B2/B3/B4/B5/B7/B8/B28, TDD-B40 <i>*SIM card & service charges not included</i>
Diagrams	